



EMBERLUX

|

2023 | ISSUE 02



Royal Shakespeare Theatre, Stratford-upon-Avon

Organise your space, elevate your style!

Creating a feature wall with built-in storage is a great solution for your room. Using a variety of materials and accessories, you can create a unique and striking look.

Our EMBERLUX cabinet range has been formed to offer a new way of creative living. Our range of bespoke furniture enables you to have a tidy and stylish home life, in open-plan kitchen areas, living-rooms, bedrooms, home-offices or conservatories.

Founded in 2005 in Stratford-upon-Avon, CK Fires Ltd are a multi-award-winning manufacturer. Our Evonic Fires brand is proud to produce a range of British built electric appliances and are considered as one of the most technically advanced manufacturers in the world. Our range has a heating solution to suit any interior, with a variety of styles, sizes and flame effects to choose from.

PLEASE NOTE: EMBERLUX prides itself on constant development and innovation. We therefore reserve the right to alter the specification of any EMBERLUX product without formal notice. The images in this brochure are produced using photography and CGI. Although the utmost care has been taken to accurately portray our products, we always advise a viewing in person at an approved EMBERLUX stockist's showroom.



|

“We strive to design and deliver sustainable products that are aspirational and driven by technology through innovation.”

|

ANDREW COX | MANAGING DIRECTOR



UK MADE

EMBERLUX collaborates with market leading UK-based suppliers to produce high quality cabinetry for our installations. Customers can be confident in choosing an EMBERLUX media unit, you are supporting British jobs, reducing your carbon footprint through shorter supply chains, and investing in a product that is built to last.



SUSTAINABILITY

EMBERLUX focuses on creating media wall solutions with minimal environmental impact by using eco-friendly materials, reducing waste, and implementing energy-efficient production processes. Our company, CK Fires, have been certified ISO:14001 and ISO:9001 compliant, meaning that we are more conscious of our supply chain and where components are sourced.



NIBE GROUP MEMBER

CK Fires Ltd is a group member of NIBE, a Swedish multinational company that specialises in energy-efficient and environmentally friendly heating solutions. NIBE is a world leader in heating technology, with a wide range of products and solutions for homes, commercial buildings, and industrial applications.



Stockists Network

EMBERLUX has a network of dedicated stockists. Visit the stockists section of our website which features a detailed search engine to locate your nearest dealer. You can even narrow the search down to find a particular model using our product filter tool.

www.emberlux.co.uk



The Suite Range

The suite range of furniture is very versatile and available in a range of sizes to suit any room area.

Adding an electric fire provides a comfortable and attractive solution for those looking to add warmth and style to their living space.

Optional extras, of quartz or granite shelf's, door handles, panelling and lighting, will elevate the appearance of our furniture which has been designed to be a stand out feature in your home.

Options for the suite range can be found on pages 22 - 29.

Bexley



SMALL | Venice Doors in Matt Kombu Green



MEDIUM | Venice Doors in Supermatt Cashmere



LARGE | Richmond Doors in Matt Colonial Blue

Lambeth



SMALL | Valore Doors in Driftwood Light Grey



| Harrow |



SMALL | Richmond Doors in Supermatt Light Grey, with optional shelving



| Islington |



SMALL | Right-hand model with Venice Doors in Matt Kombu Green



MEDIUM | Right-hand model with Valore Doors in Evora Stone Graphite



LARGE | Left-hand model with Venice Doors in Supermatt Cashmere

Teddington



SMALL | Venice Doors in Matt Sage Green, with optional shelving



MEDIUM | Venice Doors in Supermatt Cashmere



Cabinet Options

These models offer three door types: Valore, Richmond, and Venice. The Valore has a textured finish and square cut edges whereas the Richmond and Venice are smooth to the touch and have delicate curved edges. Doors and end panels are available in a range of colour's as shown below. All doors have soft close hinges and are handleless so you simply push to open. A choice of handles are available as an optional extra, see page 25 for details. A top pelmet and lighting pelmet, which sits underneath the top section of cabinets, are available as an optional extra for the Bexley suites. Also, shelving can be added to the Harrow and Teddington small models.

DOOR'S



Valore



Richmond



Venice

INTERNAL COLOUR



Dusk Grey

PELMETS - BEXLEY SUITES



Top Pelmet



Lighting Pelmet

SHELVING



Harrow & Teddington smalls

VALORE COLOUR'S



Evora Stone Graphite



Driftwood Light Grey



Kendal Oak

RICHMOND AND VENICE COLOUR'S



Matt Black



Matt Colonial Blue



Matt Kombu Green



Matt Mussel



Matt Sage Green



Supermatt Cashmere



Supermatt Light Grey



Urban Oak



Paintable Vinyl

Unpainted cabinets allow you to choose and apply your own paint colour to match or contrast with your home decor.

PLEASE NOTE: Colour swatches shown above are for reference only and a physical swatch should be viewed.

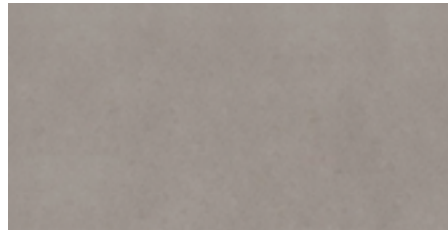
Shelf Options

Both Quartz and Granite are extremely durable materials, making them among the best choices you can find.

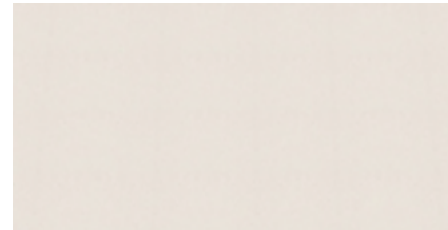
GROUP ONE



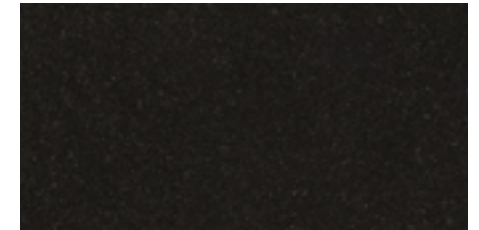
Boreas Quartz



Oslo Quartz



Arcadia Quartz



Black Granite

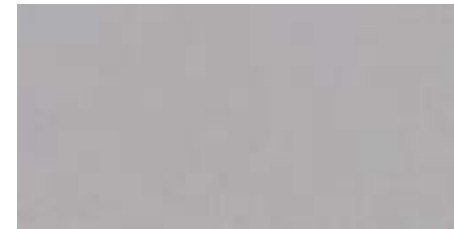
GROUP TWO



Brittanica Quartz



Sineda Quartz



Nordic Grey Quartz

GROUP THREE



Concrete Terreno Quartz (matt finish)



Petra Concrete Quartz (matt finish)

PLEASE NOTE: Colour swatches shown above are for reference only and a physical swatch should be viewed.

Fire and Lighting Options

ELECTRIC FIRES

All models below come with continental silver birch or woodland logs and SCHOTT® clear float glass as standard. Log upgrades are available and UHD glass is an optional extra for the Halo range.

ISLINGTON RANGE - 850 or 1000 SL Fire |

E-lectra and Volante



SMALL MODELS

1030 Fire | Halo and E-series

1000 Fire | E-lectra and Volante



MEDIUM MODELS

1500 Fire |

Halo, E-series, E-lectra
and Volante



LARGE MODELS

1800 Fire |

Halo, E-series, E-lectra
and Volante

E-LLUMINATE LIGHTING KIT

Feature lighting has now become an essential factor in the design of a living space, with many consumers choosing to integrate lighting into their room to accent their fireplace, television, or simply add an extra light source. Try adding the new App. controlled, e-Illuminate smart lighting for that extra wow factor.



Visit the Evonic Fires website for further information -
www.evonicfires.co.uk

Door Handle Options

Cabinet handles and knobs can change the appearance of a room or furniture. From the material and texture to the colour and shape, decorative handles are the ultimate finishing touch.

U PULL HANDLE

Available in two sizes - 200mm and 500mm



Matt Black



Polished Chrome



Brushed Brass



Brushed Copper

CUP HANDLE



Black Nickel



Polished Nickel



Brushed Brass



Antique Copper

KNOB



Black Nickel



Polished Nickel



Brushed Brass



Antique Copper

FIXINGS INCLUDED

Panelling Options

Adding back panelling to a cabinet can be a great way to accentuate its design and give it a finished look.



Evora Stone Graphite



Driftwood Light Grey



Kendal Oak



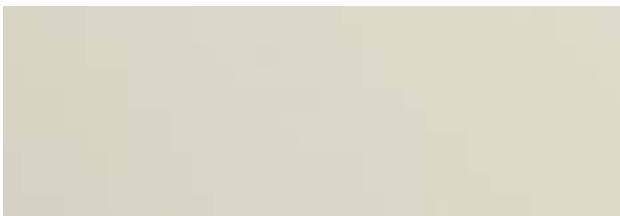
Matt Black



Matt Colonial Blue



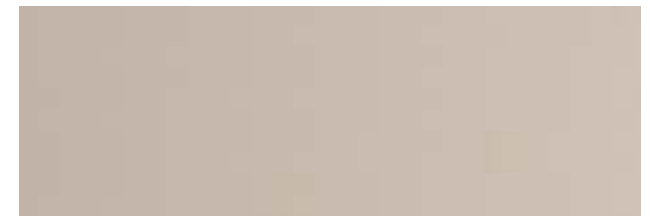
Matt Kombu Green



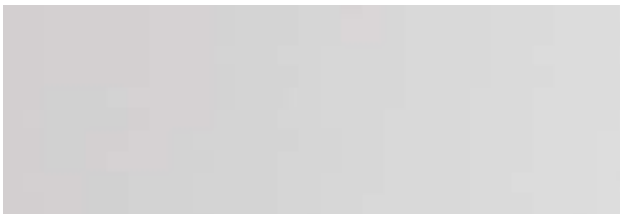
Matt Mussel



Matt Sage Green



Supermatt Cashmere



Supermatt Light Grey



Urban Oak



Paintable Vinyl

PLEASE NOTE: Colour swatches shown above are for reference only and a physical swatch should be viewed.

Slatted Panelling Options



Natural Dijon Walnut with Black Strip



Natural Corbridge Oak with Black Strip



Kaisersberg Oak with Black Strip



Natural Dijon Walnut



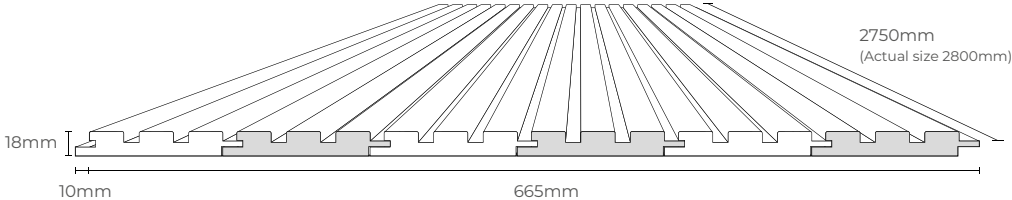
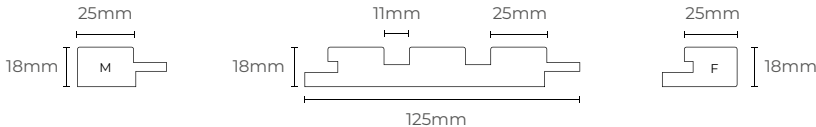
Natural Corbridge Oak



Magnum Opus Onyx Gray



Magnum Opus Soft Touch Black

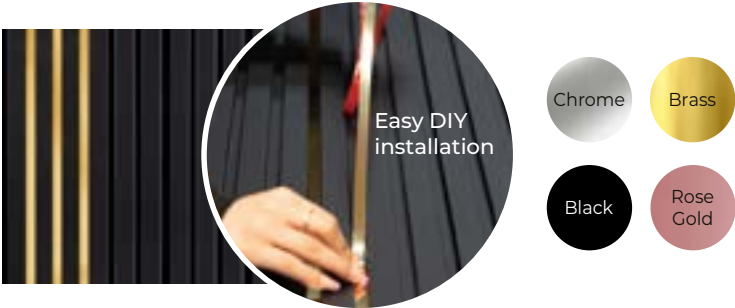
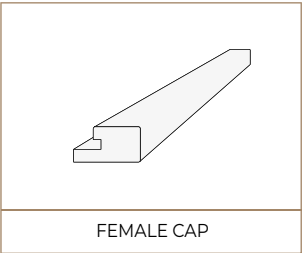
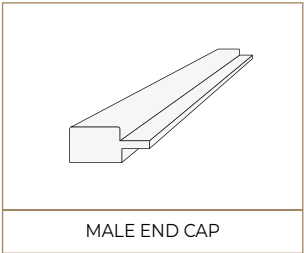


Specifications

Panel width	125mm	Area coverage	665mm (w) x 2750mm (h) = 1.83 square meter
Panel height	2750mm - after cutting the edges (2800mm - actual size available in the box)	Material	Laminated MDF
Thickness	18mm	Quantity	6 panels in a box
Weight	3.20kg each panel	Maintenance	Cleaning with wet cloth or mild detergent spray
Installation	Grab adhesive or mechanical fixation (such as screws and nails) on wall or surface.		
Accessories	Top and bottom trims, male and female end caps, 90° angle, black, silver and golden inserts, LED illumination.		

Accessories

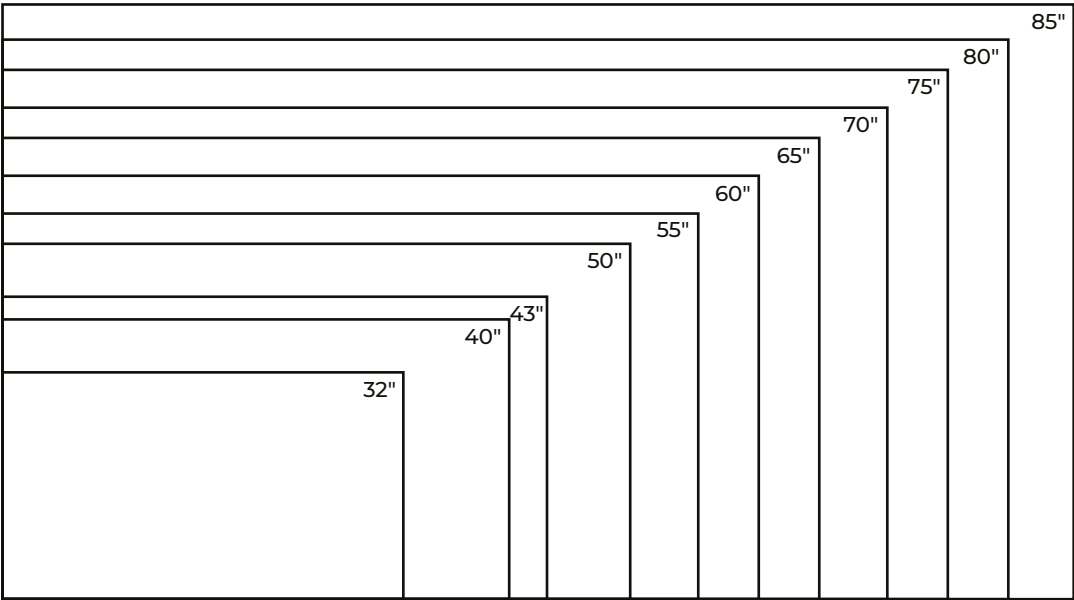
Matching colours end cap, trims and L corners are available in all product range.



PLEASE NOTE: Colour swatches shown above are for reference only and a physical swatch should be viewed.

TV Options

Choosing the ideal size TV for your cabinet is a vital aspect to consider. Below is a diagram and table to assist you, dimensions of the suites can be found on page 29. You can also make your TV stand out by adding a back panel, spaced off the wall by 32mm, which you can match to your cabinet door colour or select a contrasting option. Due to the design of the Lambeth suite, a TV is not an option for this model.



TV SIZE	TV WIDTH	TV HEIGHT	PANEL WIDTH	PANEL HEIGHT
32"	709mm	399mm	909mm	599mm
40"	886mm	498mm	1086mm	698mm
43"	953mm	536mm	1153mm	736mm
50"	1107mm	622mm	1307mm	822mm
55"	1217mm	686mm	1417mm	886mm
60"	1328mm	747mm	1528mm	947mm
65"	1440mm	810mm	1640mm	1010mm
70"	1549mm	871mm	1749mm	1071mm
75"	1661mm	935mm	1861mm	1135mm
80"	1770mm	996mm	1977mm	1196mm
85"	1882mm	1059mm	N/A	N/A



TV with back panel

Base Units

For those who want to add their own chimney breast, we offer two base units in the Suite range, including fire, as standalone items which can be customised with different door types and colour choices shown on page 22. Optional extras of quartz or granite shelf's, door handles and fire models are available, see pages 23-25.

CHELSEA | available in Small, Medium or Large



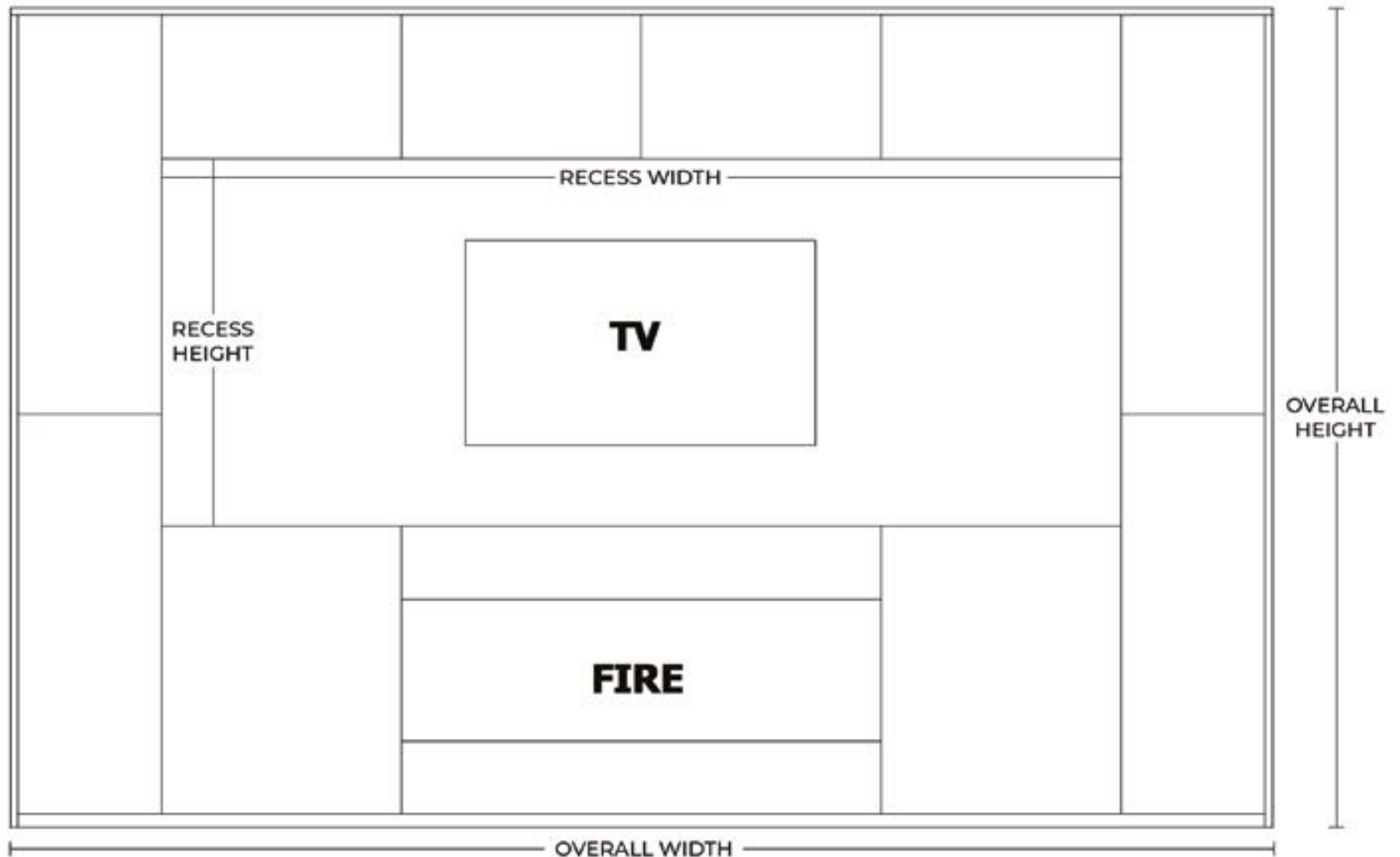
MODEL	HEIGHT	WIDTH	DEPTH	FIRE MODEL
Chelsea small	752mm	2437mm	350mm	1030
Chelsea medium	752mm	3037mm	350mm	1500
Chelsea large	752mm	3637mm	350mm	1800

EPSOM | available in Small or Large



MODEL	HEIGHT	WIDTH	DEPTH	FIRE MODEL
Epsom small	575mm	2037mm	474mm	1030
Epsom large	575mm	3037mm	474mm	1800

Dimensions



Dimensions

PAGE NO.	MODEL	OVERALL HEIGHT	OVERALL WIDTH	OVERALL DEPTH	RECESS HEIGHT	RECESS WIDTH	FIRE MODEL	NO. OF SLATTED PANELS (OPTIONAL)
12	Bexley small	2250mm	2437mm	350mm	1138mm	2437mm	1030	12
12	Bexley medium	2250mm	3037mm	350mm	1138mm	3037mm	1500	14
13	Bexley large	2250mm	3637mm	350mm	1138mm	3637mm	1800	17
14	Lambeth small	2140mm	2037mm	474mm	N/A	N/A	1030	2
15	Lambeth large	2170mm	3037mm	474mm	N/A	N/A	1800	2
16	Harrow small	2140mm	2037mm	474mm	1131mm	963mm	1030	7
17	Harrow large	2170mm	3037mm	474mm	1131mm	2000mm	1800	12
18	Islington small	2210mm	2437mm	350mm	1795mm	1547mm	850SL	14
18	Islington small	2210mm	2437mm	350mm	1795mm	1530mm	1000SL	12
18	Islington medium	2210mm	3037mm	350mm	1795mm	2747mm	850SL	20
18	Islington medium	2210mm	3037mm	350mm	1795mm	2730mm	1000SL	18
19	Islington large	2210mm	3637mm	350mm	1795mm	2147mm	850SL	25
19	Islington large	2210mm	3637mm	350mm	1795mm	2130mm	1000SL	23
20	Teddington small	2032mm	1957mm	350mm	882mm	1162mm	1030	4
20	Teddington medium	2032mm	2557mm	350mm	882mm	1762mm	1500	6
21	Teddington large	2032mm	3157mm	350mm	882mm	2362mm	1800	8



The Modular Range

Modular furniture with an electric fire is a great option for those who want to add warmth and style to their living space. This type of furniture is designed to be flexible and fit the changing needs of your home.

These pieces can be configured in a variety of ways to suit your specific needs, and the electric fire is incorporated into the design as a functional and aesthetic element.

Options for the modular range can be found on pages 36 - 37.

Kingston

The Kingston modular unit is a combination of a chimney breast with electric fire and base unit, shelf top and a choice of shelving units, complete with remote strip lighting, and cupboard units. This provides ample storage space and display area, making the Kingston a functional and stylish piece of furniture that can be customised to fit a specific space.



Chimney breast and fire unit, shown in Concrete Flow



Chimney breast and fire unit with two single floating shelving units and two additional single cupboard units, shown in Charcoal Flow



Chimney breast, shown in Charcoal Flow, and fire unit with two double floating shelving units and four additional single cupboard units, shown in Concrete Flow



Chimney breast and fire unit with two single floating shelving units, two double freestanding shelving units and six additional single cupboard units, shown in Concrete Flow

Cabinet Options

CABINET COLOURS



Concrete Flow



Charcoal Flow

PLEASE NOTE: Colour swatches shown above are for reference only and a physical swatch should be viewed.

KNOB



Black Nickel



Polished Nickel



Brushed Brass



Antique Copper

FIXINGS INCLUDED

Fire and Base Unit Options

ELECTRIC FIRES

The models below come with continental silver birch or woodland logs and clear float glass as standard. Log upgrades are available and UHD glass is an optional extra for the Halo range.



1250 Fire |

Halo, E-series, E-lectra and Volante



1500 Fire |

Halo, E-series, E-lectra and Volante

Visit the Evonic Fires website for further information -
www.evonicfires.co.uk

SUTTON BASE UNIT

For those who want to add their own chimney breast, we offer a base unit, including fire, as a standalone item which can be customised by adding additional cupboard units if required.

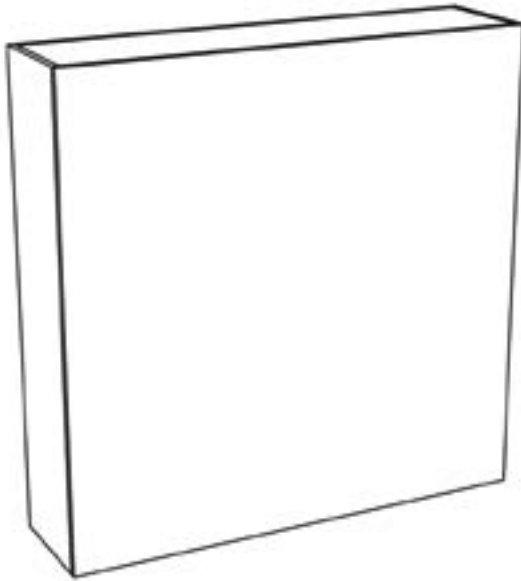
Available in Concrete or Charcoal Flow, knobs can be added for that ultimate finishing touch.

Measurements for the fire unit and single cupboard units can be found on page 38.

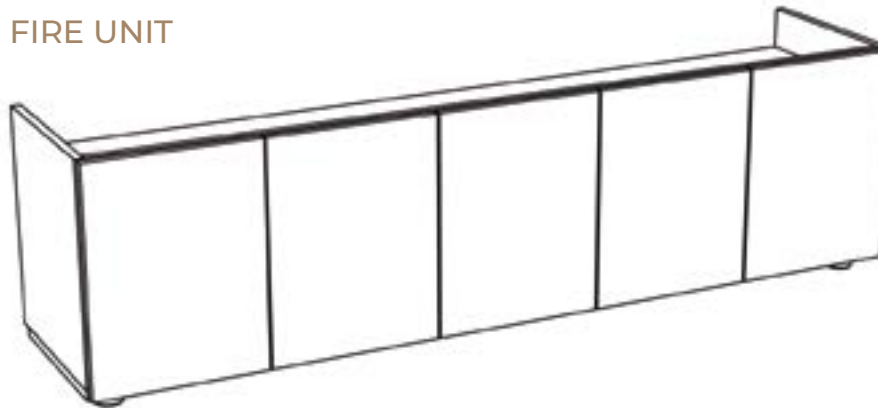


Kingston Specifications

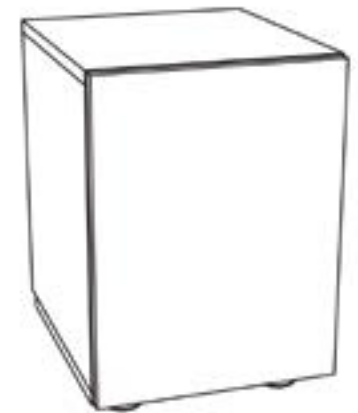
CHIMNEY BREAST



FIRE UNIT



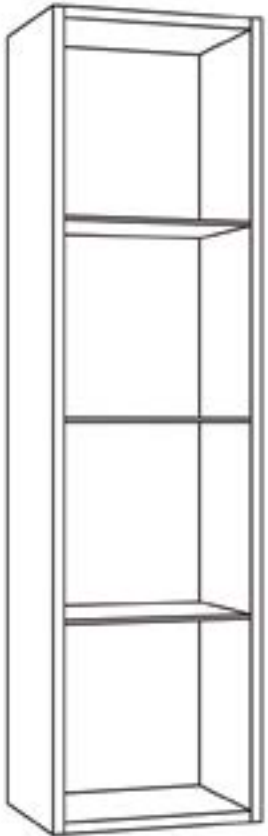
SINGLE CUPBOARD



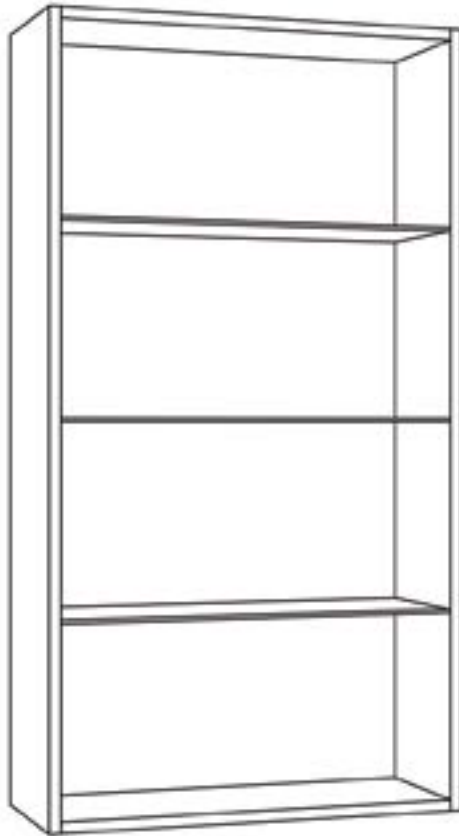
	HEIGHT	WIDTH	DEPTH
CHIMNEY BREAST	1100mm	1296mm	328mm
FIRE UNIT	482mm incl. feet	1725mm	398mm
SINGLE CUPBOARD UNIT	482mm incl. feet	345mm	398mm
SINGLE FLOATING SHELF UNIT	1280mm	345mm	280mm
DOUBLE FLOATING SHELF UNIT	1280mm	690mm	280mm
SINGLE FREESTANDING SHELF UNIT	1655mm	345mm	280mm
DOUBLE FREESTANDING SHELF UNIT	1655mm	690mm	280mm

Kingston Specifications

SINGLE FLOATING
SHELF UNIT



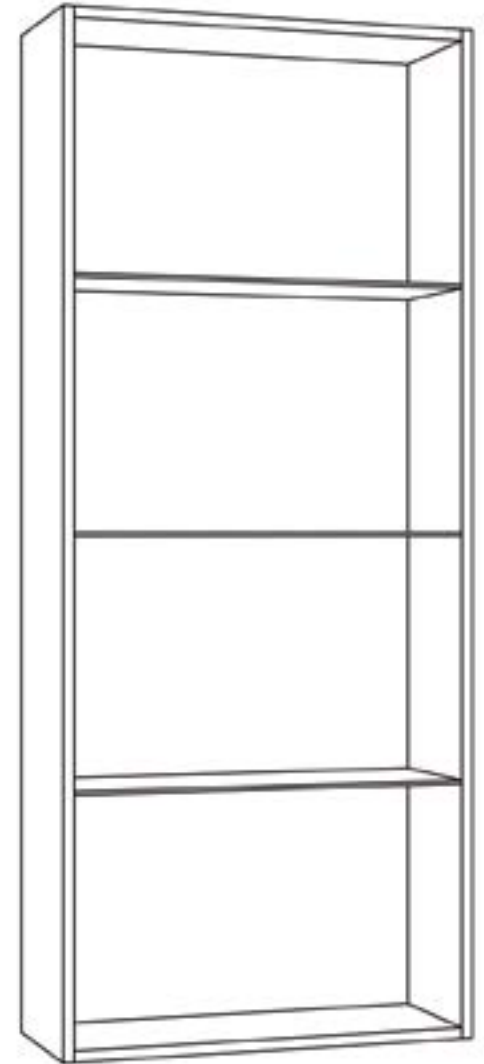
DOUBLE FLOATING
SHELF UNIT



SINGLE
FREESTANDING
SHELF UNIT



DOUBLE FREESTANDING
SHELF UNIT





EMBERLUX

DEALER STAMP

+44 (0) 1789 263868 | sales@emberlux.co.uk | www.emberlux.co.uk |   