

2024/2025

HEAT, LIFE AND ATMOSPHERE

A real fire is a beautiful and romantic source of heat which creates a warm, cosy atmosphere. There is nothing quite like settling down and watching the flames flickering in the stove as a comfortable warmth spreads throughout the room. A real wood burning stove is an integral part of a home, and provides a wonderful focal point for the entire family during the colder months of the year.



WESTFIRE

THE ART OF DANISH ENGINEERING



ecodesign
ready

ATTENTION TO **DETAIL**

When the weather outside begins to chill, a stove naturally becomes the heart of the home. A centre focal point for all the family, it is essential to choose a brand you can trust. Westfire stands for high quality craftsmanship and impeccable attention to detail; leaving you safe in the knowledge that your stove will last for many years, performing to the highest levels of efficiency and environmental standards. When correctly used with well managed wood, your stove will be a responsible option for a renewable energy source. For a functional and highly efficient stove with a focus on design, Westfire is the perfect choice.



ecodesign
ready



WESTFIRE.UNIQ.26 | BLACK WITH SOAPSTONE

5,0 kW



ecodesign
ready



WESTFIRE.UNIQ.32 | INSERT | WF | FULL GLASS FRONT

70 kW



CAREFULLY DESIGNED FOR WARMTH

Westfire designs stoves with great care and attention to detail. A wood burning stove must complement the home in which it is installed since it will outlast both the furniture and the décor. Westfire has therefore developed a future-proof design characterised by simplicity, timelessness and contemporary technology.

Using a wood burning stove to heat your home is a natural process. Westfire stoves make effective use of thermal energy and all Westfire stoves are compliant with Europe's toughest environmental legislation.

A stove brings the family closer – all members, young and old, can work together to split logs, bring in firewood and feed the fire. And the whole family can enjoy the great indoor climate and the natural heat produced by a wood burning stove.



ecodesign
ready



WESTFIRE.UNIQ.32 | INSERT | NF | FULL GLASS FRONT

70 kW



ecodesign
ready



WESTFIRE.UNIQ.37 | BLACK

72 kW





WESTFIRE.UNIQ.37 | BLACK WITH PEDESTAL 1

7,2 kW





WESTFIRE.UNIQ.37 | BLACK WALL-MOUNTED

7,2 kW



ecodesign
ready



WESTFIRE.UNIQ.37 LARGE | BLACK

7.2 kW



ecodesign
ready



WESTFIRE.UNIQ.36 | BLACK

7,2 kW



BEAUTIFUL SOLUTIONS THAT **WORK**

Westfire is a tried-and-tested concept, with attention paid to every detail. We have many years' of experience in the development of exciting and functional solutions for the home. We offer both hearth plates and chimneys to complement our range of stunning wood burning stoves, making it easy to create a stylish and exclusive look in your home.

ecodesign
ready



WESTFIRE.UNIQ.36 | BLACK WITH PEDESTAL 1

72kW





ecodesign
ready



NEW



WESTFIRE.UNIQ.45 | BLACK W/BOTTOM DOOR

5,0 kW







NEW



WESTFIRE.UNIQ.44 | BLACK

5,0 kW



ECONOMIC ADVANTAGES

Using wood to heat your home can yield huge savings, and it is often possible to recoup the investment in a new wood burning stove over a very short period of time. It is important to choose the right size of stove, and to position it correctly within the house, in order to obtain the greatest possible benefit from the heat which is emitted. Westfire has developed many different types of wood burning stoves, all available in different sizes with a range of options. Which, of course, means that you will get the most advantageous solution, whatever your requirements.





WESTFIRE.UNIQ.35 | ON 50 MM BLOCK

4,6 kW



WESTFIRE.UNIQ.35 | WITH 100 MM LEG

4,6 kW



QUALITY STOVES IN LINE WITH THE LATEST TECHNOLOGY

Westfire has developed a complete range of wood burning stoves, flue pipes, chimneys and accessories recognisable by their clean lines. All Westfire's products are manufactured in accordance with the finest traditions of craftsmanship. The stoves incorporate the latest combustion technology, which ensures economical and cleaner combustion compared to older models. Westfire's stoves are available with top or back flue outlets, making them suitable for new and older buildings alike.



ecodesign
ready



WESTFIRE.UNIQ.26 | BLACK WITH SOAPSTONE

5,0 kW







WESTFIRE **WOOD INSERTS**

A Westfire wood insert stove is designed to fit beautifully into a wall, providing efficient heat and adding a touch of style to your living space. Westfire has created a range of wood inserts with dimensions to suit your requirements.

Uniq 35 – is a 400 mm wide body, designed to fit into a British fireplace which can be installed with a 3 or 4 sided frame.

Uniq 32 – is a 800 mm wide body, available in steel or glass front variants which can be installed with wide 4 sided or narrow 4 sided frame options.

All models have direct air options.





ecodesign
ready



WESTFIRE.UNIQ.32 | INSERT | NF | FULL GLASS FRONT

70 kW



STUNNING **DESIGN** AND A COMFORTABLE CLIMATE

Westfire manufactures a range of highly functional wood burning stoves that meet the most stringent requirements taking the environment into consideration. Convection stoves heat the air and spread it evenly throughout the room. At Westfire, you can choose the stove that best matches your requirements. Whatever your choice of Westfire stove, you are guaranteed an efficient and economical source of heat.





WESTFIRE HEARTH PLATES

	STANDARD PLATE MEDIUM	STANDARD PLATE BIG	TEARDROP SHAPED PLATE	TEARDROP SHAPED PLATE	TRUNCATED PLATE	SEMI CIRCLE
WF STEEL PLATES 2 mm		 Product no. 5015	 Product no. 5011			
WF SLATE PLATES 20 mm	 Product no. 5007	 Product no. 5005	 Product no. 5001			
WF GLASS PLATES 12 mm Hardened glass	 Product no. p19			 Product no. p15	 Product no. p14	 Product no. p21
WF GLASS PLATES 6 mm Hardened glass		 Product no. p6	 Product no. p11	 Product no. p15	 Product no. p14	

TECHNICAL DATA

	TESTED OUTPUT	RECOMMENDED AREA	LOADING DOOR (LOG LENGTH)	CE	TESTING NS EN DEFRA	DISTANCE COMBUSTIBLE REAR	DISTANCE COMBUSTIBLE SIDES	ENERGY
WESTFIRE.UNIQ.26 WESTFIRE.UNIQ.26 COMPACT	5,0 kW	30-100 m²	30 cm	●	● ● ● ●	15 cm	35 cm	A ⁺
WESTFIRE.UNIQ.32 INSERT (NARROW FRAME) WESTFIRE.UNIQ.32 INSERT (WIDE FRAME)	7,0 kW	50-150 m²	65 cm	●	● ● ● ●	30 cm	20 cm	A
WESTFIRE.UNIQ.35 50 MM BLOCK WESTFIRE.UNIQ.35 INSERT 4-SIDED WESTFIRE.UNIQ.35 INSERT 3-SIDED	4,6 kW	30-100 m²	29 cm	●	● ● ●	20 cm	20 cm	A
WESTFIRE.UNIQ.36 WESTFIRE.UNIQ.36 WALL-MOUNTED WESTFIRE.UNIQ.36 PEDESTAL 1 WESTFIRE.UNIQ.36 COMPACT	7,2 kW	50-150 m²	35 cm	●	● ● ● ●	17,5 cm	45 cm	A
WESTFIRE.UNIQ.37 WESTFIRE.UNIQ.37 WALL-MOUNTED WESTFIRE.UNIQ.37 LARGE WESTFIRE.UNIQ.37 PEDESTAL 1 WESTFIRE.UNIQ.37 COMPACT	7,2 kW	50-150 m²	35 cm	●	● ● ● ●	10 cm	60 cm	A
WESTFIRE.UNIQ.44 WESTFIRE.UNIQ.45 WESTFIRE.UNIQ.45 WITH BOTTOM DOOR	5,0 kW	30-100 m²	32 cm	●	● ● ● ●	10 cm	30 cm	A ⁺

Flue Outlet: Top and rear flue outlet suitable for 125 mm single wall pipe with internal placement.
Flue collar is also suitable for 150 mm ID Flue pipe with external placement where regulations allow.

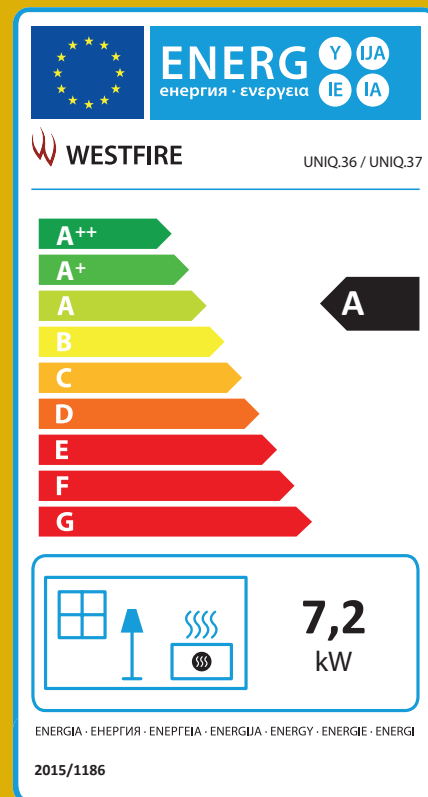
ecodesign
ready

The EU ECODESIGN Directive is a European-wide program to reduce energy consumption and environmental emissions during a products' life cycle. When buying a Westfire stove you can be comfortable that your stove is amongst the cleanest burning stoves in the market today, as all stoves are compliant with ECODESIGN and the toughest environmental standards in Europe.

Approved for use
in Smoke
Control
Areas

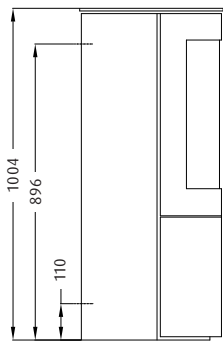


Westfire combustion chambers are very efficient and designed to burn cleanly. Stoves displaying the tick off logo are approved for burning wood in a smoke control area. Special note should be taken to the manufacturer's instructions on burning stoves in a smoke control zone. Wood burnt should be split and dry and have a moisture content of 15% or below and be free of chemical treatments. When purchasing a Westfire stove please request a DEFRA approved model to ensure you receive an approved stove.

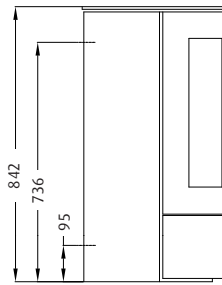


MODELS

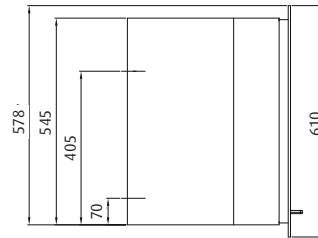
WESTFIRE.UNIQ.26
WEIGHT: 105 KG



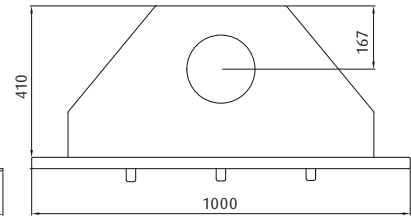
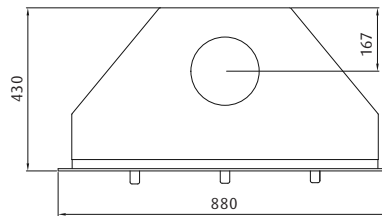
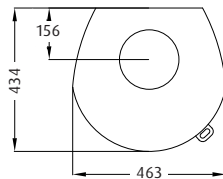
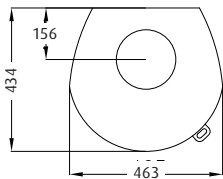
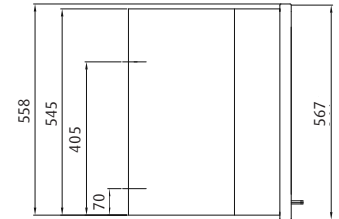
WESTFIRE.UNIQ.26 COMPACT
WEIGHT: 95 KG



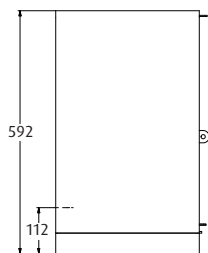
WESTFIRE.UNIQ.32 | INSERT
NARROW 4-SIDED FRAME
WEIGHT: 110 KG



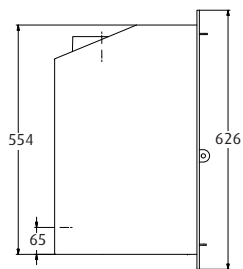
WESTFIRE.UNIQ.32 | INSERT
WIDE 4-SIDED FRAME
WEIGHT: 110 KG



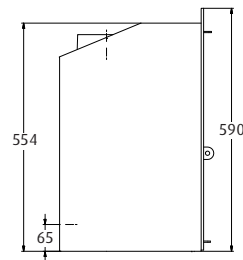
WESTFIRE.UNIQ.35 | 50 MM BLOCK
WEIGHT: 95 KG



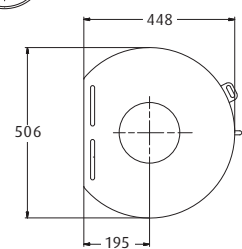
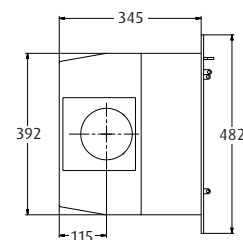
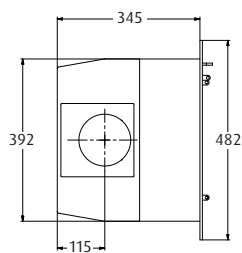
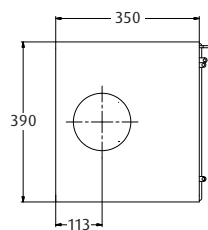
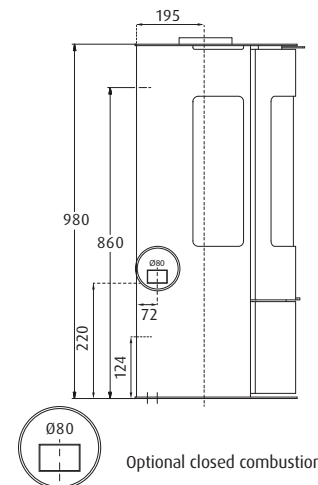
WESTFIRE.UNIQ.35 | INSERT
4-SIDED FRAME
WEIGHT: 75 KG



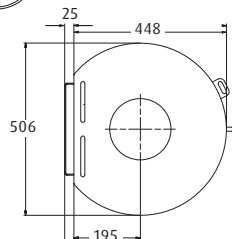
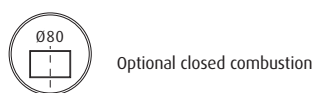
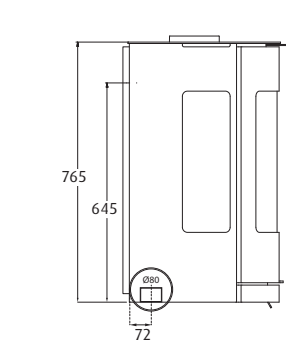
WESTFIRE.UNIQ.35 | INSERT
3-SIDED FRAME
WEIGHT: 75 KG



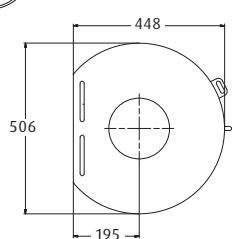
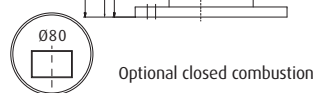
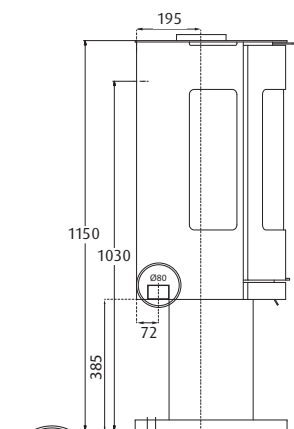
WESTFIRE.UNIQ.36
WESTFIRE.UNIQ.37
WEIGHT: 90 KG



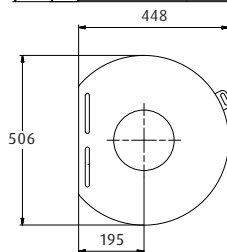
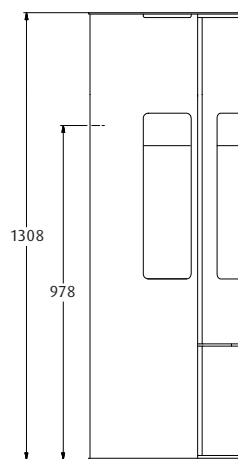
WESTFIRE.UNIQ.36
WESTFIRE.UNIQ.37
 WALL-MOUNTED | WEIGHT: 85 KG



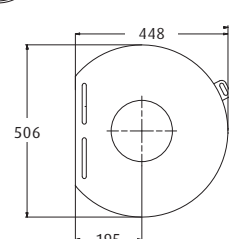
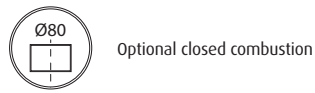
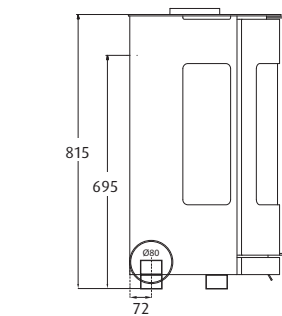
WESTFIRE.UNIQ.36
WESTFIRE.UNIQ.37
 PEDESTAL 1 | WEIGHT: 95 KG



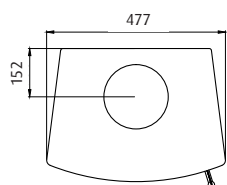
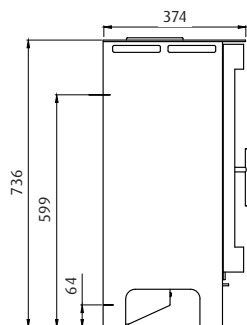
WESTFIRE.UNIQ.37 | LARGE
 WEIGHT: 110 KG



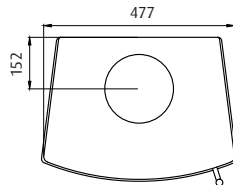
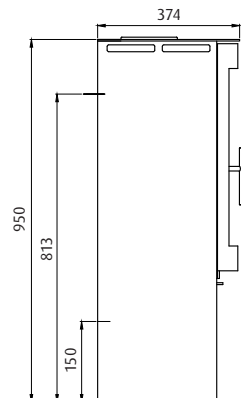
WESTFIRE.UNIQ.36
WESTFIRE.UNIQ.37
 COMPACT | WEIGHT: 85 KG



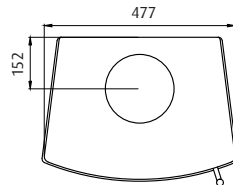
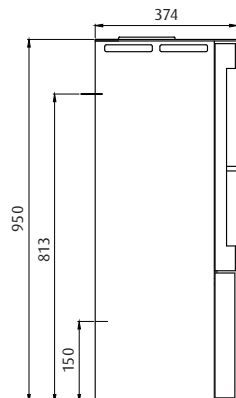
WESTFIRE.UNIQ.44
 WEIGHT: 82 KG



WESTFIRE.UNIQ.45
 WEIGHT: 90 KG



WESTFIRE.UNIQ.45 WITH BOTTOM DOOR
 WEIGHT: 90 KG





QUALITY YOU CAN FEEL

All wood burning stoves from Westfire carry the CE mark. A CE/EN approval means that the stoves have been tested and approved by the Danish Technological Institute in accordance with EN 13240. The CE mark is your guarantee that the stove meets a number of stringent requirements as regards safety, the environment and fuel economy. Westfire stoves are characterised by a number of technical advantages that ensure their long durability, high heating efficiency and reliant operation.

Fuel types

Westfire stoves are accredited for burning wood and CE marked for this purpose. Although the appliances will burn other fuels, Westfire do not recommend the use of such fuels in our appliances.



E-MAIL: INFO@WESTFIRE.DK | WWW.WESTFIRE.DK

DISTRIBUTOR

